

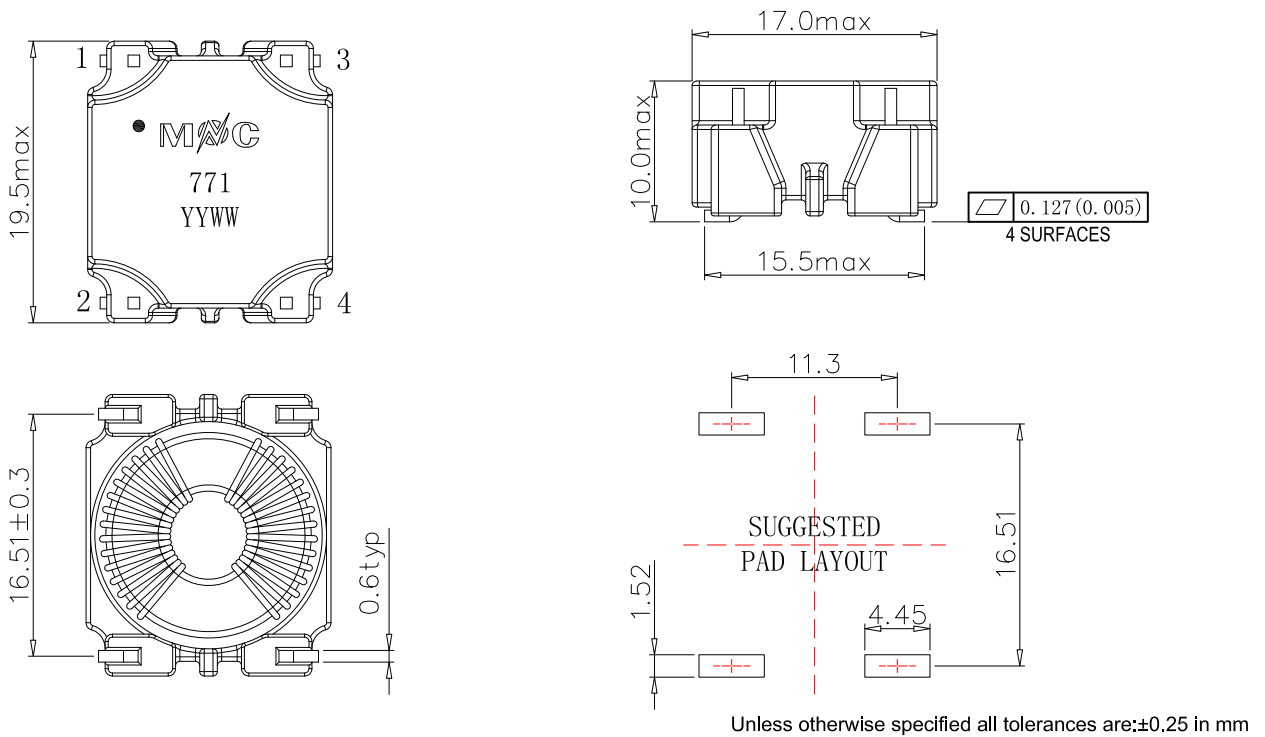
- Common mode chokes for AC Power lines
- High impedance to minimize common mode noise
- Excellent EMI performance
- Operate temperature range: -40 °C to +125 °C (Including self temperature rise)
- Storage temperature range: -40 °C to +125 °C



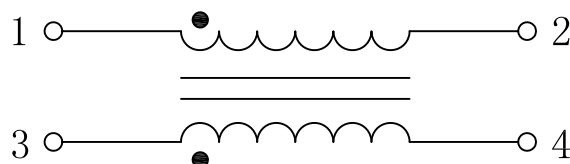
### Electrical Specifications @25 °C

Part Number	OCL @10KHz, 0.1V	DCR	Turns Ratio	Rated Current $\Delta T \cong 40^{\circ}C$	Hi-Pot 1mA/1S/50Hz
	1-2, 3-4	1-2, 3-4	1-2 : 3-4		1-2 to 3-4
CM1385SG221N	225uH $\pm 35\%$	60m $\Omega$ Max.	1 : 1	2.3A Max.	1000Vac
CM1385SG591N	590uH $\pm 35\%$	25m $\Omega$ Max.	1 : 1	3.6A Max.	1000Vac
CM1385SG771N	770uH $\pm 35\%$	25m $\Omega$ Max.	1 : 1	3.6A Max.	1000Vac
CM1385SG132N	1320uH $\pm 35\%$	60m $\Omega$ Max.	1 : 1	2.25A Max.	1000Vac
CM1385SG152N	1470uH $\pm 35\%$	65m $\Omega$ Max.	1 : 1	2.2A Max.	1000Vac

## MECHANICAL

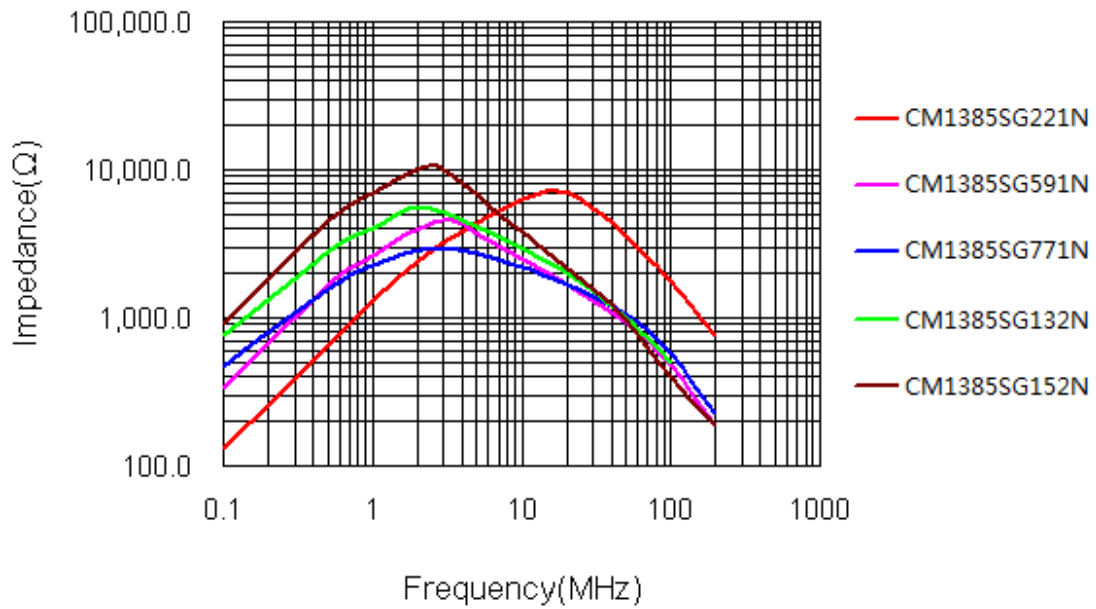


## SCHEMATICS

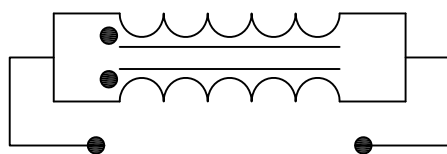
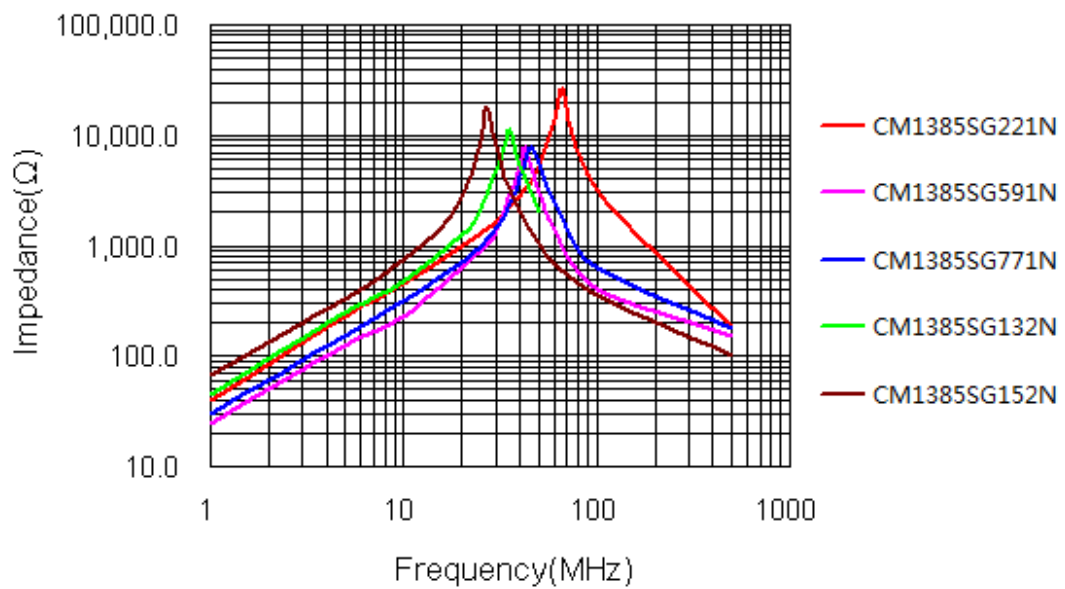


## Impedance Vs Frequency

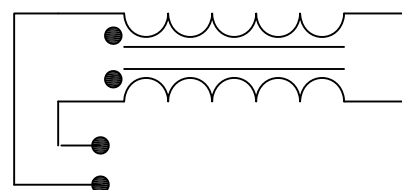
### Common Mode



### Different Mode



**Common Mode**



**Different Mode**